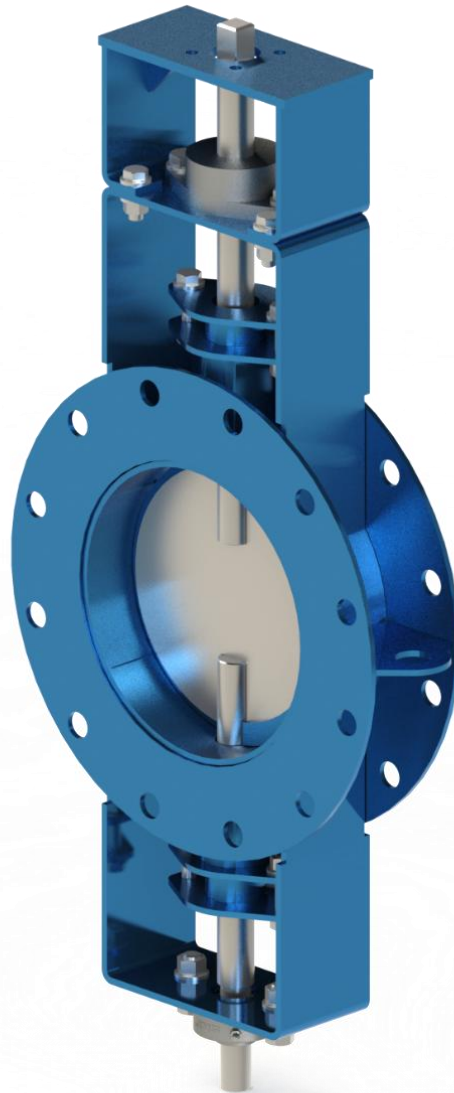




RK ENGINEERING
FLOW SOLUTION

DBV - BUTTERFLY DAMPER



RK Engineering

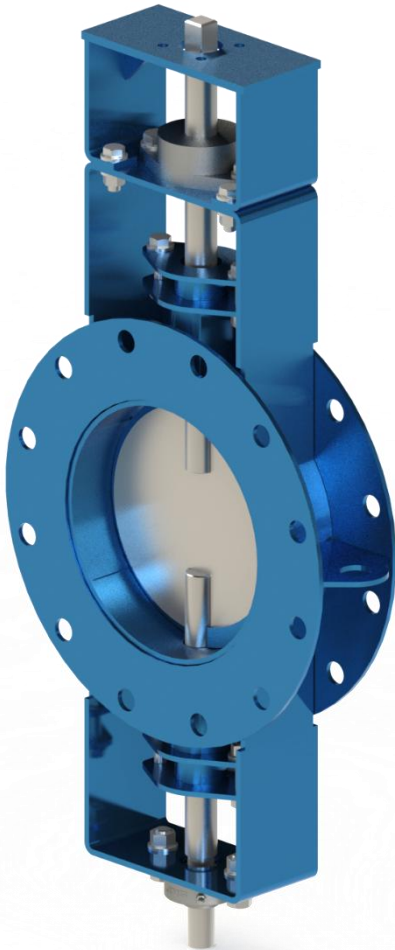
Model: DBV

Butterfly Damper - DBV

Size Range : 2" – 24" / DN 50 – DN 600

Pressure Rating : PN 6 & PN 10

DAMPER BUTTERFLY

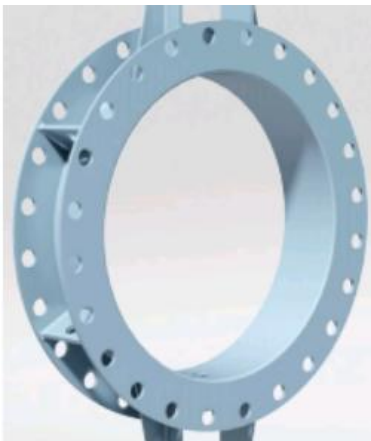


Introduction:

- The Butterfly damper for assembly between flanges on gas conduit systems. The RK ENGINEERING Damper model is designed for operation at pressures of 100 mbar, with recommended speeds of below 30 m/s and temperatures of 600 °C.
- It is a relatively airtight valve with a closing degree of between 90% and 99% which can reach 100% if an air sealing system is included.
- The standard model of these dampers is designed so that the assembly is carried out in such a way that the drive shaft always remains in a horizontal position, although there is an option of assembly with the shaft in vertical position on request.

Specifications:

- Construction is generally from Mild or Stainless Steel with the body of the valve formed from rolled steel angles or channels dependent on the size.
- The Damper itself is formed from two plates which sandwich, if required, a felt seal or alternatively it can be a single blade sized for close fitment to the valve body. The type selected is dependent on the amount of air leakage that can be accepted.
- The split spindle mounting system minimizes turbulence within the air stream and these spindles are mounted on either two or four bolt flanged mounted sealed for life bearings.
- Seals can be fitted if required through a simple 'O' ring or, on high temperature applications, the conventional stuffing box is utilised.
- The type of actuator, to suit the clients' requirements or specification, can be added to all sizes and, on Electric actuator.

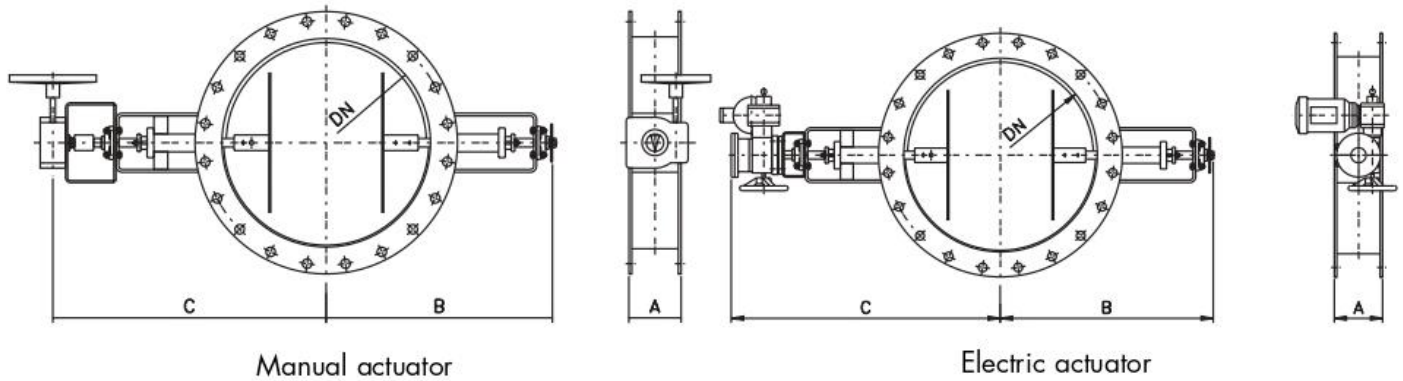


FLANGED END



BUTT WELD END

DIMENSIONS TABLE FOR DN 200 – DN 2000



Common				Gear	Electric
VALVE SIZE		A	B	C	C
NPS	DN				
8	200	200	460	580	750
10	250	200	500	610	780
12	300	200	510	630	800
14	350	200	550	650	830
16	400	200	570	680	850
18	450	200	600	710	880
20	500	200	620	730	900
24	600	200	660	800	930
28	700	200	720	825	950
32	800	200	800	875	1075
36	900	200	820	925	1175
40	1000	250	870	1000	1250
48	1200	250	980	1100	1350
56	1400	250	1075	1200	1450
64	1600	300	1200	1300	1600
72	1800	300	1300	1400	1700
80	2000	300	1425	1500	1800

All Dimensions are in mm.