

KGO Through Conduit

Features and benefits

- KGO Knife Gate Valve is a Bi-directional valve specially designed for media with high consistency, to handle high density paper stock, wood chips, plastic pellets etc., which makes the valve suitable for a wide range demanding applications in industries like Pulp & Paper, Power, Chemical, Waste Water Treatment etc.
- The double seat design in the 88 series assures a non-clogging shut off on either normal or reverse flow.
- The body is made of full Lug style cast two-piece with Reinforced ribs for larger size for additional strength.
- The port design to allow greater flow capacity and Lower pressure drop.
- The gate is made of a single piece with O-Port design. The through gate design eliminates unbalanced forces on gate and allows valve to open and close on solid column application.

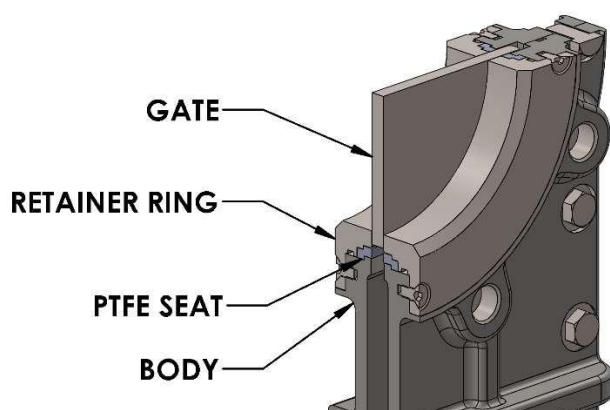
Technical specification

Size	2" to 24"
Design Pressure	2" – 6" : 150 psi 8" – 10" : 115 psi 12" – 16" : 90 psi 18" – 24" : 75 psi
Seat	Soft Seat
Design standard	MSS SP-81
Face to Face	MSS SP-81
Flange Drilling	ASME B16.5, ASME B16.47
Body Shell Test	MSS SP-151
Body Seat Test	MSS SP-151

Seat Temperature Chart

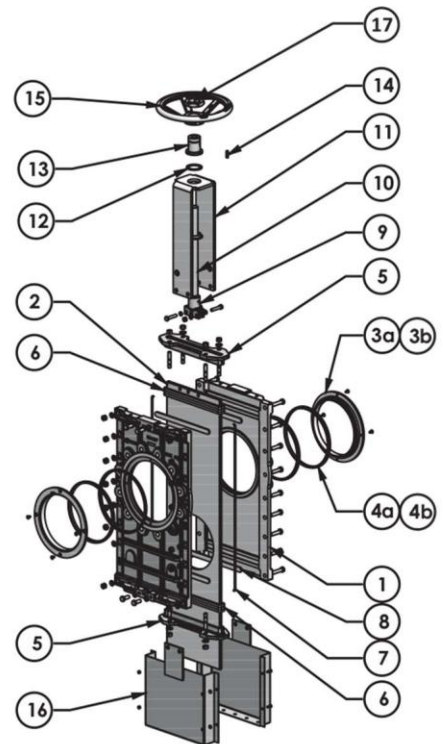
Material	Max. Temp. °C
EPDM	120
Nitrile	120
Viton	200
PTFE	250

Note: For PTFE, leakage rate will be 5 CC/Min/inch. Please consult our technical team for packing material and more details and / or other material options



Parts List for Knife Gate Valve

Part #	Part	Details
1	Body	CF8 / CF8M / CG8M / WCB
2	Gate	SS 304 / 316 / 317 / 17-4PH + Nitrited
3a	Retainer Ring	CF8 / CF8M / CG8M / WCB + Nitrited
3b	Retainer Ring cone	CF8 / CF8M / CG8M / WCB + Nitrited
4a	Resilient Seat *	Viton / EPDM / NBR
4b	Replaceable Metal Seal *	CF8 / CF8M / CG8M / WCB + Nitrited
5	Packing Gland	CF8 / CF8M / CG8M
6	Packing *	PTFE Imp. Syn. Fibre
7	O - Ring	Viton / EPDM / NBR
8	Gate Guide	PTFE
9	Clevis	CF8
10	Stem	SS 304 / SS 410
11	Yoke	SS 304 / CS
12	Thrust Washer	Brass
13	Stem Sleeve*	SAE 660
14	Hand Wheel Key	Plated Steel
15	Hand Wheel	Aluminum / WCB
16	Protection Cover	CS
17	Hand Wheel Nut	Plated Steel



Suggested Spare Parts : Seat (#4a & 4b), Packing (#6), Stem Sleeve (#13)



Bevel Gear



Electric Actuator

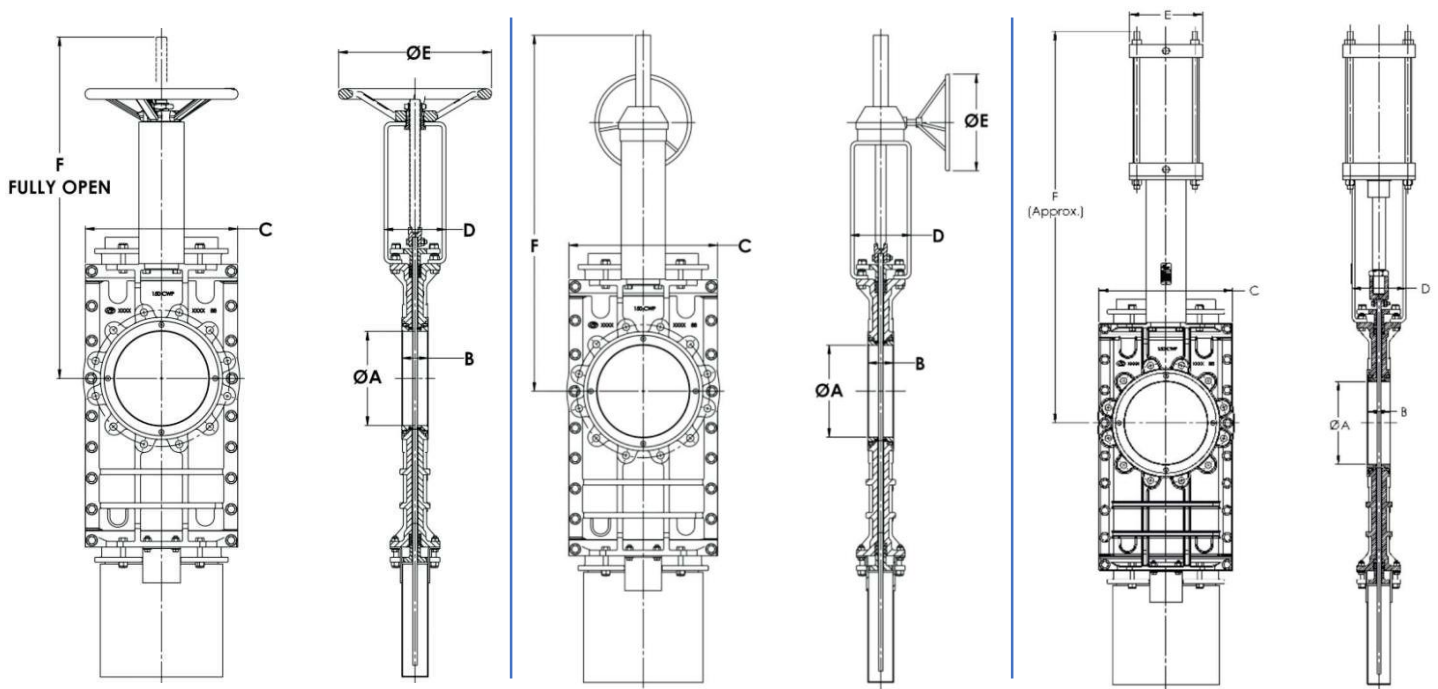


Pneumatic Single /
Double Acting Cylinder



Hydraulic Double
Acting Cylinder

DIMENSIONS TABLE FOR 2" – 24"



Common						HW		GE		CYL	
VALVE SIZE		ØA	B	C	D	ØE	F	ØE	F	ØE	F
NPS	DN										
2	50	1.88	1.89	7.08	4.65	10.00	21.65	11.81	21.65	4	26.57
2.5	65	2.75	2.01	7.87	4.65	10.00	22.13	11.81	22.13	4	28.54
3	80	2.75	2.01	7.87	4.65	10.00	22.13	11.81	22.13	4	28.54
4	100	3.88	2.01	8.66	4.65	10.00	24.80	11.81	24.80	4	30.79
6	150	5.81	2.24	10.63	5.51	10.00	29.90	11.81	29.90	5	38.11
8	200	7.36	2.76	13.39	6.30	12.00	36.40	11.81	36.40	6	44.06
10	250	9.81	2.76	16.14	6.30	12.00	43.90	11.81	43.90	8	52.83
12	300	11.50	2.99	18.11	6.30	16.0	48.43	15.75	48.43	8	56.97
14	350	13.25	2.99	19.29	9.06	16.0	55.51	15.75	55.51	10	63.31
16	400	14.75	3.50	22.04	9.06	16.0	60.83	19.69	60.83	10	68.54
18	450	16.75	3.50	24.01	9.06	22.0	64.80	19.69	64.80	12	74.72
20	500	18.50	4.49	25.59	13.75	22.0	71.26	19.69	71.26	12	80.75
24	600	23.0	4.49	31.50	13.75	22.0	83.46	19.69	83.46	12	91.26

*All Dimensions are in inches